

JS-BS-900/1800V65 Series

900/1800 65° Vertical

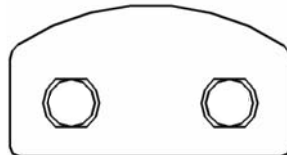


ELECTRICAL SPECIFICATIONS

Model	900/1800V65-17.5/19	900/1800V65-14.5/17.5	900/1800V65-11.5/14.5			
Frequency Range (MHz)	870 ~ 960 / 1710 ~ 1880					
Gain (dBi)	900	1800	900	1800	900	1800
	17.5	19	14.5	17.5	11.5	14.5
VSWR	<1.4		<1.4		<1.4	
Front Back Ratio (dB)	>25dB		>25dB		>25dB	
3dB BW	Horizontal	65° ±6°				
	Vertical	8° / 6°		17° / 8°		34° / 17°
Polarization	Vertical					
Intermod IM3 (dBm)	<-107					
Input Impedance	50Ω					
Max Power	200 Watts					
Lightning Protection	DC Ground					
Connector Type	7/16" DIN					
Connector Place	Bottom					

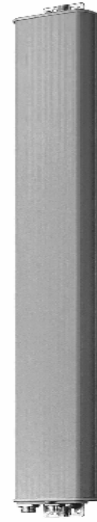
MECHANICAL SPECIFICATIONS

Length×Width×Depth	1760x270x120	1200x270x120	700x270x120
Weight	10.5Kg	8Kg	4.5Kg
Rated Wind Velocity	60m/s, 216km/h		
Radome Material	Improved PVC		



(900/1800) 65° Vertical

Jeson Wireless Ltd.



JS-BS-900/1800X65 Series

900/1800 65°

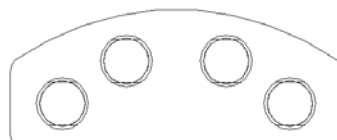
Cross Polarized

ELECTRICAL SPECIFICATIONS

Model	900/1800X65-17.5/19	900/1800X65-14.5/17.5	900/1800X65-11.5/14.5
Frequency Range (MHz)	870 ~ 960 / 1710 ~ 1880		
Gain (dBi)	900	1800	900
	2x17.5	2x19	2x14.5
	1800	900	1800
	2x17.5	2x11.5	2x14.5
VSWR	<1.4		<1.4
Front Back Ratio (dB)	>25dB		>25dB
3dB BW	Horizontal	65° ±6°	
	Vertical	8° / 6°	17° / 8°
Polarization	+45° / -45°		
Isolation (dB)	≥30dB		≥30dB
Cross-polar (dB)	≥15dB		≥15dB
Intermod IM3 (dBm)	<-107		
Input Impedance	50Ω		
Max Power	200 Watts		
Lightning Protection	DC Ground		
Connector Type	7/16" DIN		
Connector Place	Bottom		

MECHANICAL SPECIFICATIONS

Length×Width×Depth	1760x270x120	1200x270x120	700x270x120
Weight	10.5Kg	8Kg	4.5Kg
Rated Wind Velocity	60m/s, 216km/h		
Radome Material	Improved PVC		



(900/1800) 65° Cross Polarized

Jeson Wireless Ltd.